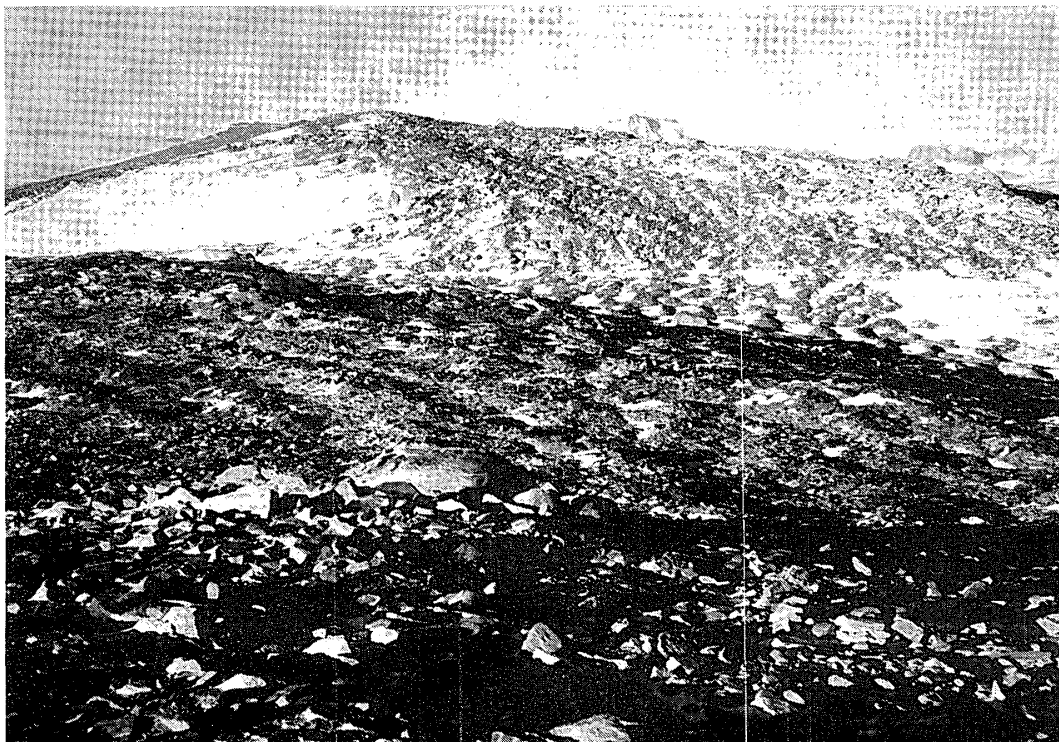
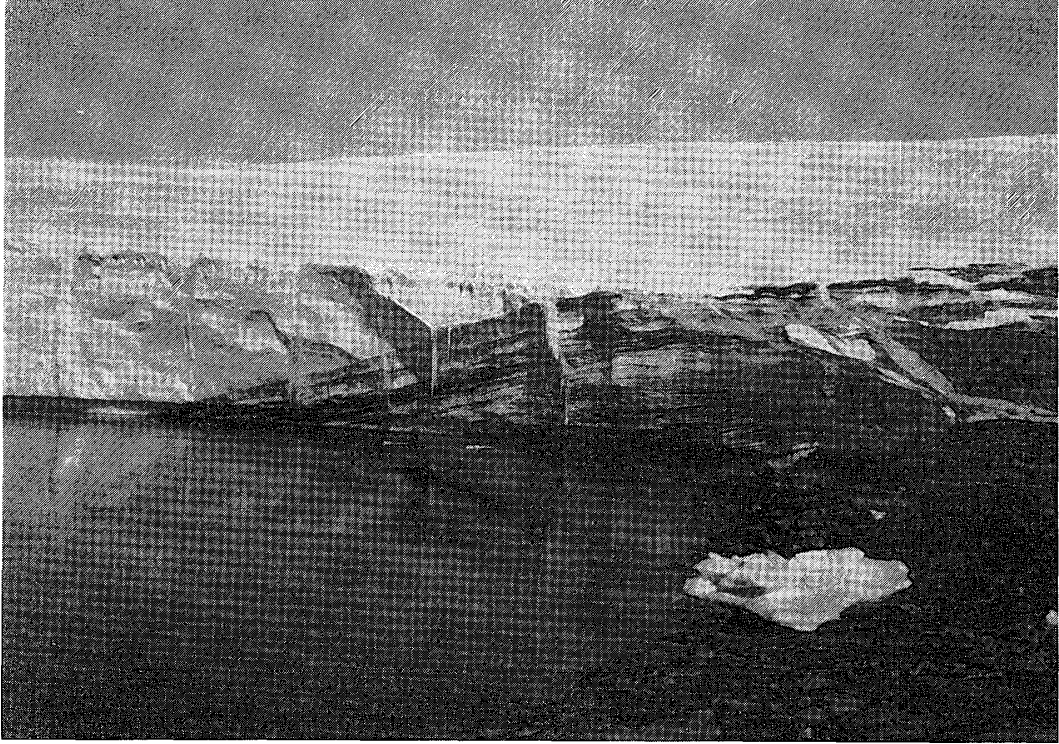


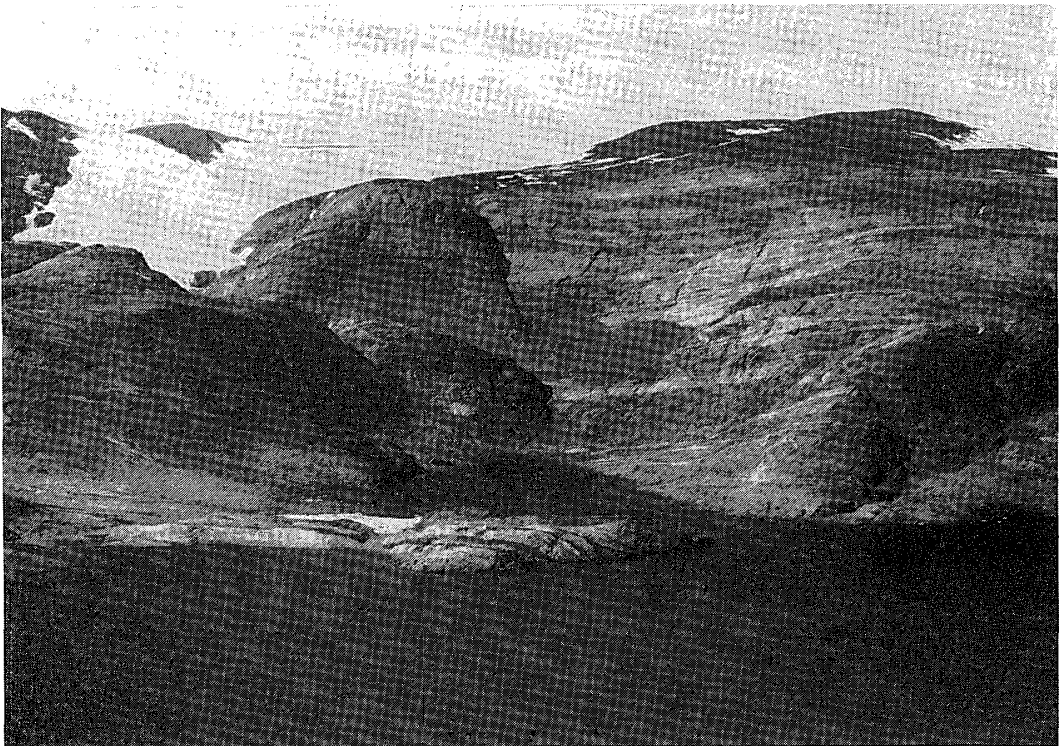
*Photo 1. Glacially smoothed surface and the surface moraine with pitted pattern in the D massif of the Yamato Mountains.*



*Photo 2. The broad ridge covered with the patterned moraine in the B massif of the Yamato Mountains.*



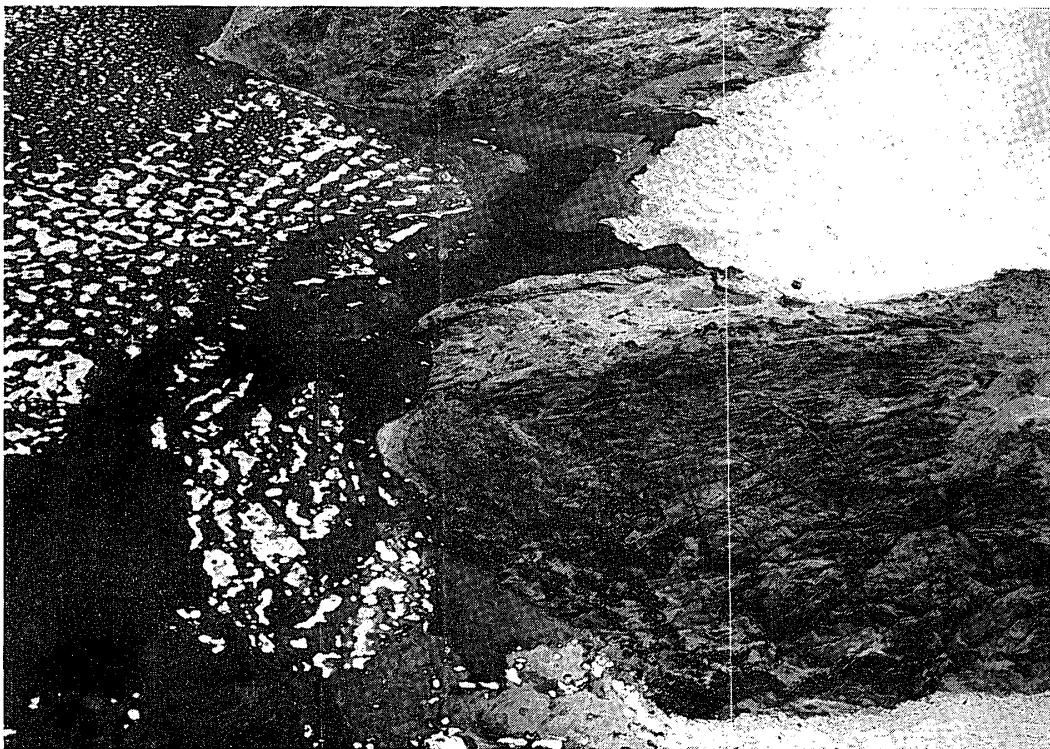
*Photo 3. The marginal part of the ice sheet with a basal moraine layer at the north-eastern part of the Skallen ice-free area.*



*Photo 4. Kami-kama and Simo-kama in the Langhovde ice-free area. These adjoining cirques had been formed at localities of intersection of several fracture lineations in gneissic bedrock.*



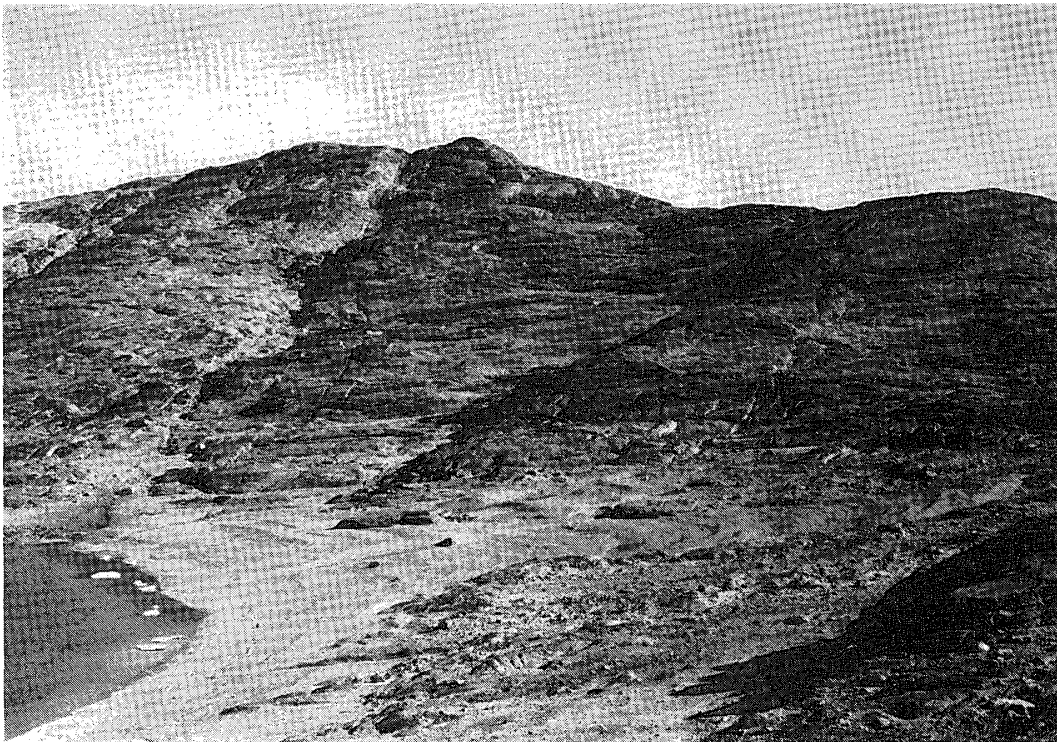
*Photo 5. A glacial groove with an overhanged side wall (p-form) in the Skallen ice-free area.*



*Photo 6. Wave-washed bedrock with the boulderly raised beach deposit on the southern coast of the Skarvsnes ice-free area.*



*Photo 7. The raised pocket beaches in the Skarvsnes ice-free area. The longitudinal profile of the beach in the middle of the photograph is shown in Fig. 11 as C.*



*Photo 8. The raised beach on Kizahasi Beach in the Skarvsnes ice-free area. Profiles of the beach are shown in Fig. 11 as A and B.*