

BATHYMETRIC CHART OF LÜTZOW-HOLMBUKTA (LÜTZOW-HOLM BAY)

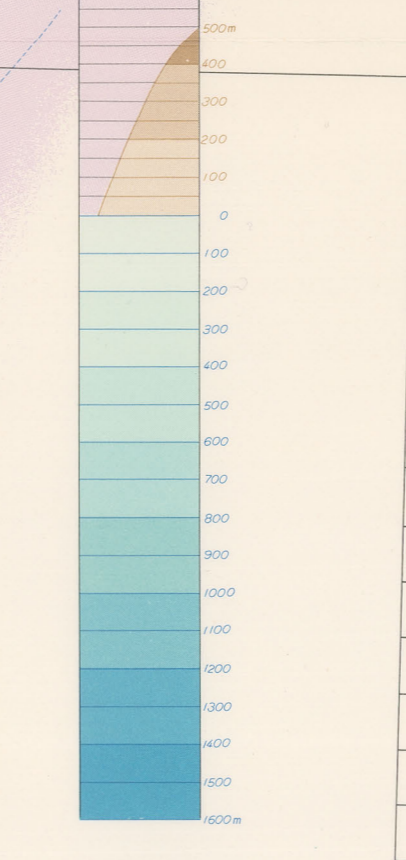
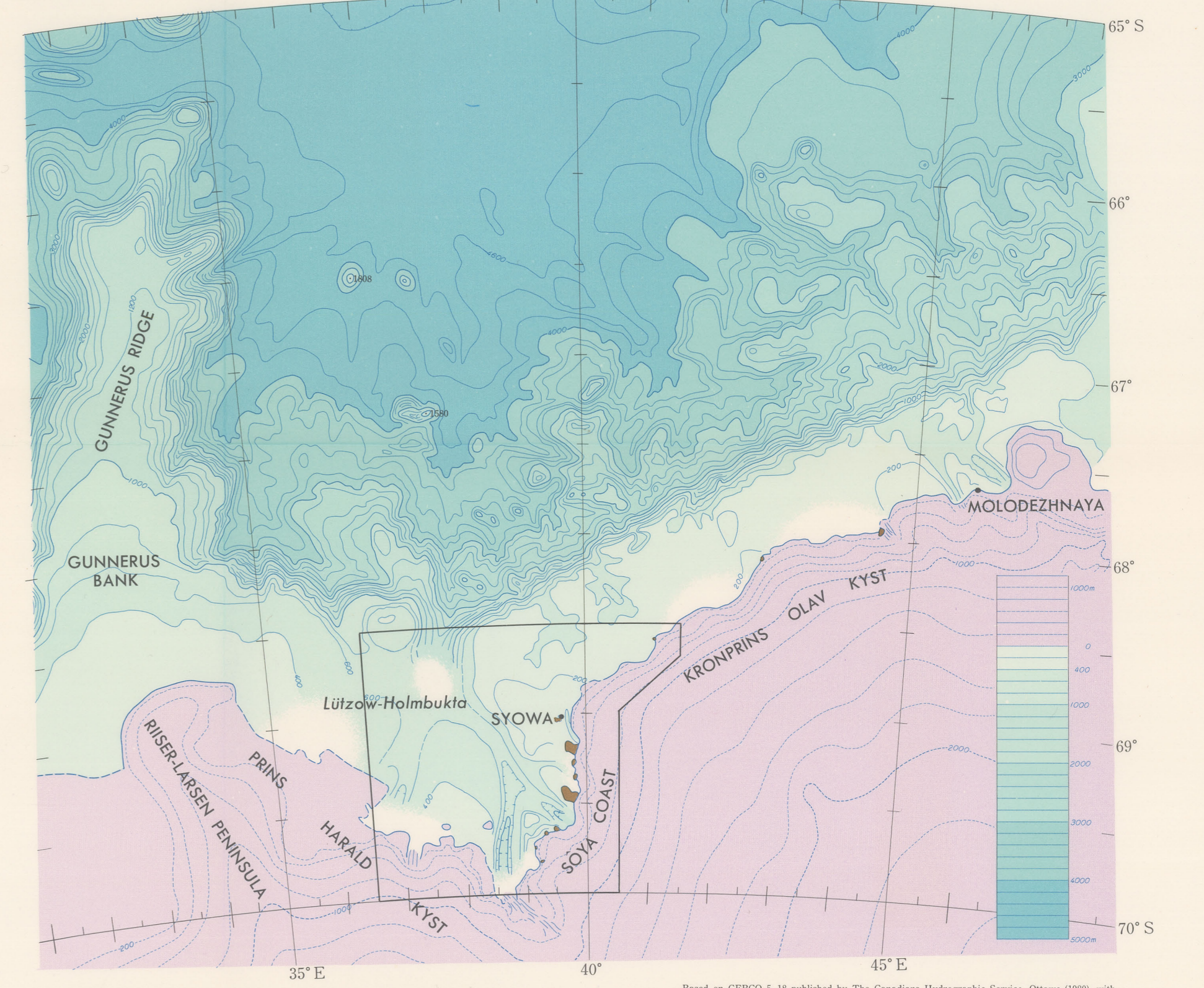
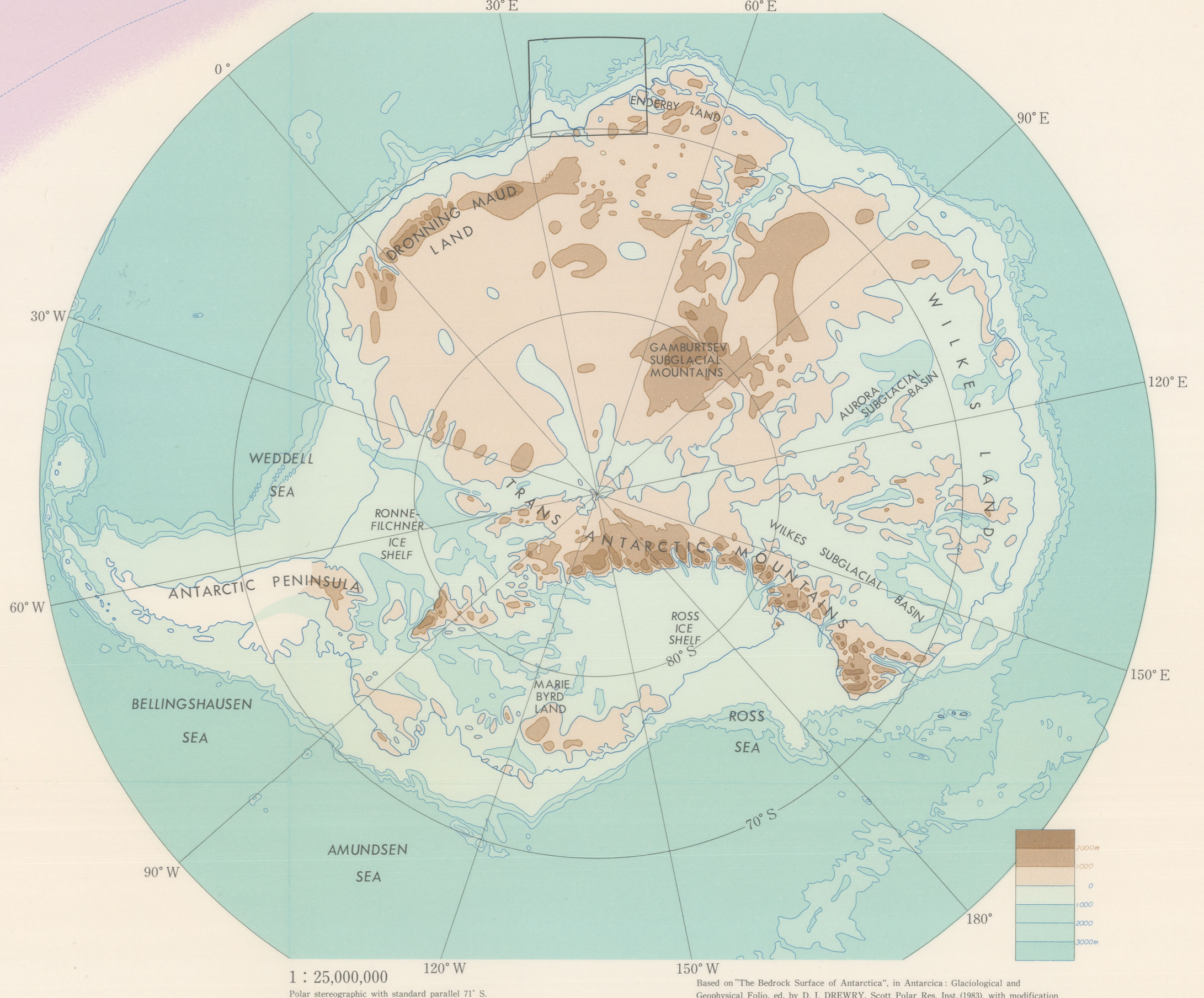
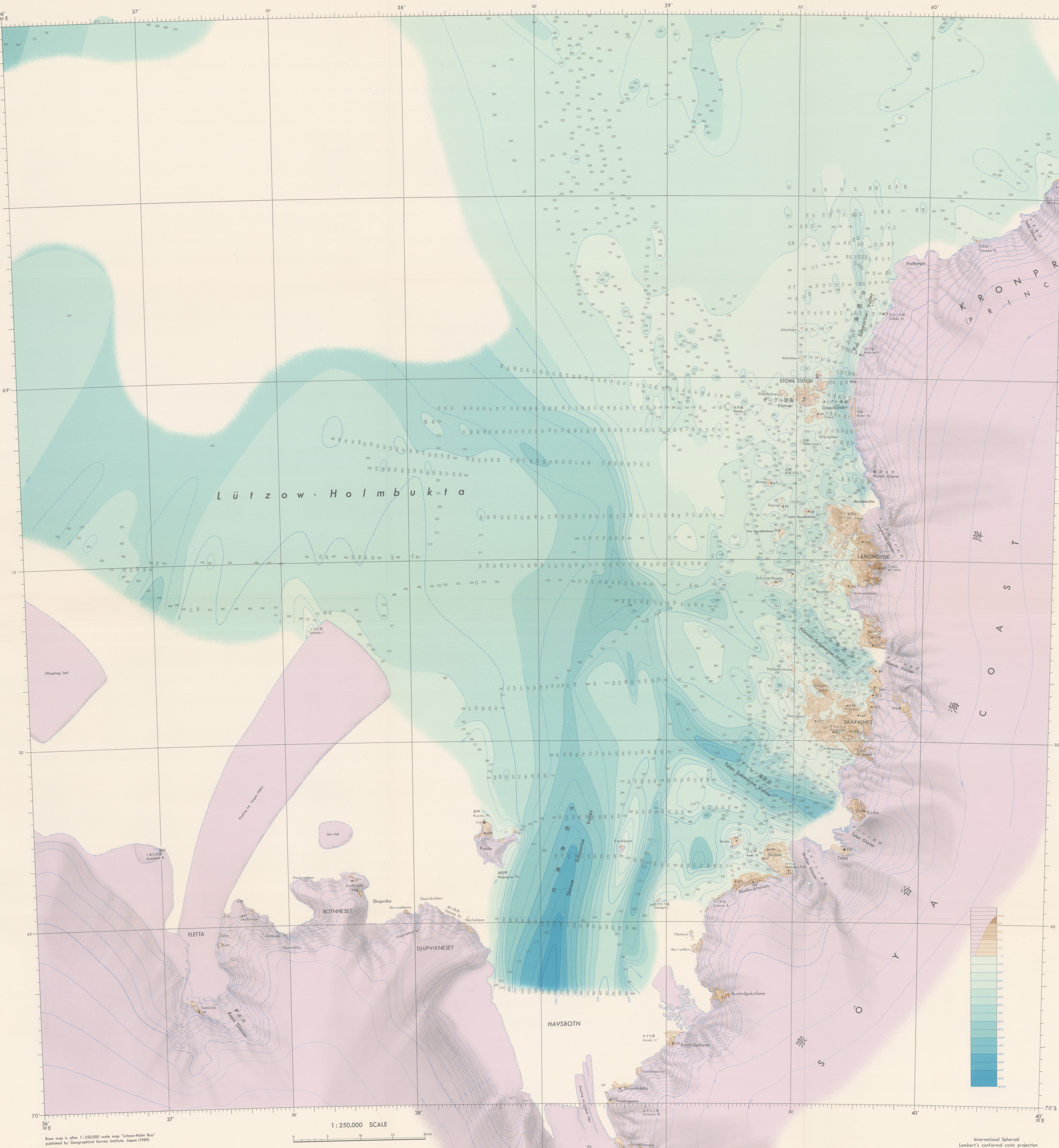
リユツウ・ホルム湾海底地形図

1 : 250,000

SPECIAL MAP SERIES OF NATIONAL INSTITUTE OF POLAR RESEARCH No. 4, 1990

Compiled by Kiichi MORIWAKI and Yoshio YOSHIDA

Data sources and references
 Parsons, K. (1971). Seabed topography and submarine topography of the glacial continental shelf in Lützw-Holm Bay, East Antarctica. *Antarct. Res.* 41, 81-105.
 Benson, M. C. (Unpublished data).
 Maritime Safety Agency, Japan (1983). Chart No. 3113 (1983).
 Maritime Safety Agency, Japan (1984). Chart No. 3012 (1984).
 Maritime Safety Agency, Japan (1985). Chart No. 3013 (1985).
 Maritime Safety Agency, Japan (1986). Chart No. 3014 (1986).
 Morikawa, K. (1973). Submarine topography near Snowe Station, Antarctica. *Antarct. Res.* 43, 101-111.
 Morikawa, K. (1978). Submarine topography of the central part of Lützw-Holm Bay and around Cape Adversus, Antarctica. *Mem. Nat. Inst. Polar Res.* 24, 1-104.
 Morikawa, K. and Yoshida, Y. (1988). Submarine topography of Lützw-Holm Bay, Antarctica. *Mem. Nat. Inst. Polar Res.* 33, 231-257.
 Office of charts of Submarine Topography, Report of the support activities for JARE-21 in 1979/1980 by the Fuel crew, Data Part 45-54, Lützow-Holm Bay.
 Office of charts of Submarine Topography, Report of the support activities for JARE-22 in 1980/1981 by the Fuel crew, Data Part 104-111, Substrate Fuel.
 Ogasawara, K. (1970). Oceanographic study on submarine morphology east of Lützw-Holm Bay, East Antarctica. Sci. Rep. Tohoku Univ., Ser. 3, 38, 191-200.
 Ogasawara, K. (1980). On the measurement of gravity on the eastern Snowe Station to 75° S and to Cook Point, Antarctica. *Res.* 35, 96-105.
 Yoshida, Y., Morikawa, K. and Furukawa, S. (1981). Submarine topography off Yamamoto Cove, Antarctica. *Geology*, ed. by H. J. Allen. Australian, North-Holland, 739-744.



1 : 250,000 SCALE

1 : 3,000,000

Base map is other 1:250,000 scale map "Lützow-Holm Bay" published by Geographical Survey Institute, Japan (1987)

International Spheroid
 Lambert's conformal conic projection
 Standard parallels 63° S and 70° S