

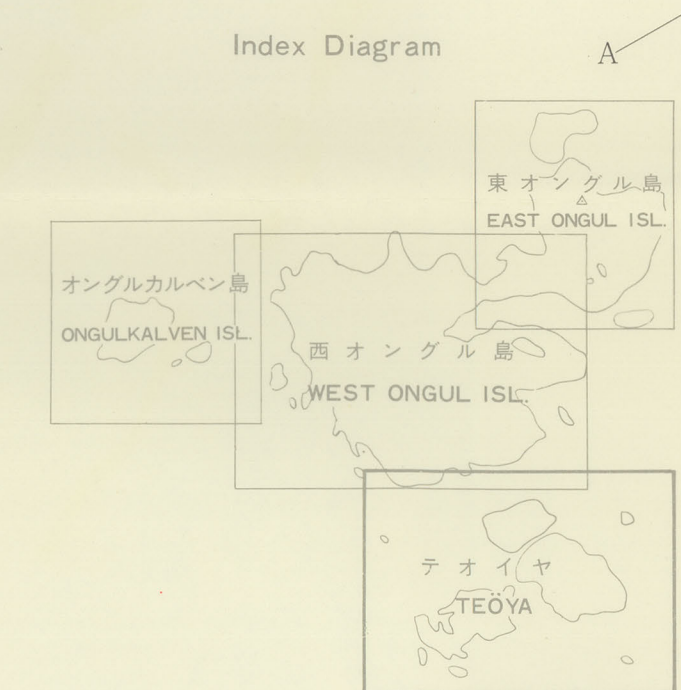
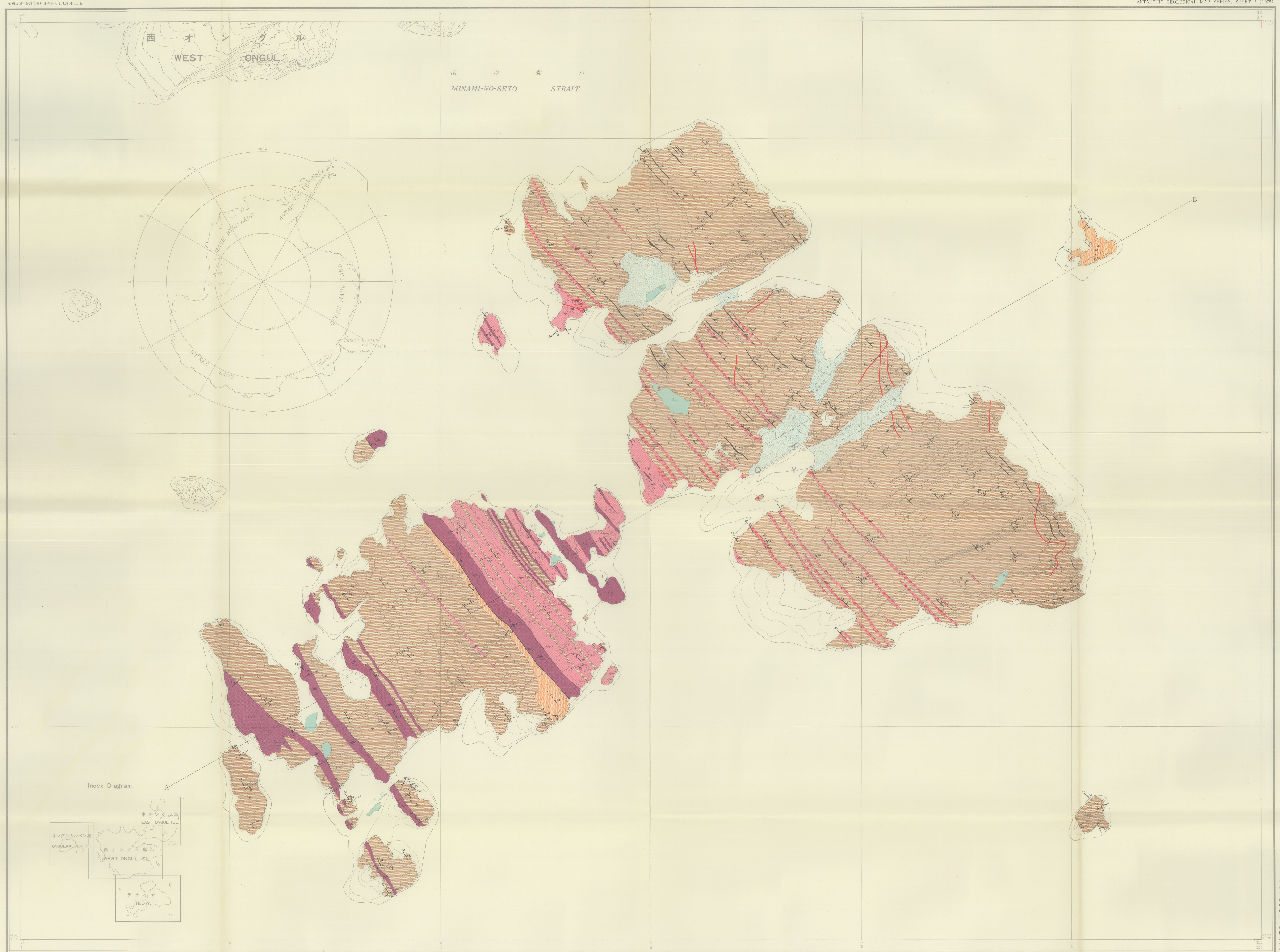
GEOLOGICAL MAP OF TEÖYA

テオイヤ地質図

ANTARCTIC GEOLOGICAL MAP SERIES, SHEET 3 (1975)

- Beach gravel and sand
砂礫層
- Pebbles
小石層
- Garnet bearing granitic gneiss
ガーネットを含有する花崗岩質片麻岩
- Granulite gneiss
麻粒岩質片麻岩
- Garnet bearing gneiss
ガーネットを含有する片麻岩
- Granulite gneiss
麻粒岩質片麻岩
- Granulite gneiss
麻粒岩質片麻岩
- Metachert
変質砂岩

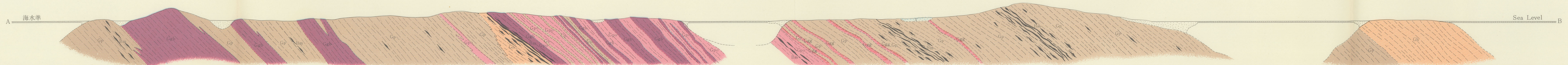
- Strike and dip of foliation
片麻岩の走向と傾斜
- Joint
節理
- Fracture
断層
- Control point
基準点
- Boundary between bare land and ice covered land
氷雪被覆地と裸地の境界
- Tide mark
潮位線
- Lake or pond
湖沼
- Contours
等高線



1:5,000
スケール 0 100 200 300 400 500
距離単位: 1 km

NATIONAL INSTITUTE OF POLAR RESEARCH, TOKYO, JAPAN

Geological survey by Koten YAMAI in 1967-69
Takeshi YAMAI in 1968-69
Takeshi YAMAI in 1969-70
Compiled by
Takeshi YAMAI



1975
TEÖYA
テオイヤ
1:5,000