

I. Compiled Stratigraphic Data from Cores Drilled at Mizuho Station

Stratigraphic analyses including layer features, grain sizes and depth hoar levels, were made under the transmitting fluorescent light for snow samples prepared from 20-m pit and drilled cores of JARE-12 and -13. Samples for the analyses were thin plates of about 5 mm in thickness, which were cut out vertically from a fresh snow wall of the 20-m pit and the core of JARE-13, while the analyses for the core of JARE-12 were not conducted by preparing thin plates but by using the whole core that had been cut in half lengthwise. Depths of measurements and names of observers are listed in Table 1. In Figs. 1–6 the results of the stratigraphic analyses are given for cores of JARE-12 (3.6–69.6 m) and JARE-13 (69.6–145.4 m). The definition of the grain size and depth hoar level, abbreviated as D.H.L., is found in WATANABE *et al.* (Mem. Natl Inst. Polar. Res., Spec. Issue, **10**, 25–48, 1978).

(Hideki NARITA, Okitsugu WATANABE, Kazuhide SATOW and Fumio OKUHIRA)

Table 1. Depth range of stratigraphic observations

| Source of samples | Depth range of observation (m) | Observers |
|---------------------------|--------------------------------|-----------------------------|
| 20-m pit | 0 – 20.0 | F. OKUHIRA |
| Drilled core (JARE-12) | 3.6– 69.6 | O. WATANABE and K. SATOW |
| Drilled core (JARE-13) | 13.6–145.4 | F. OKUHIRA and H. NARITA |

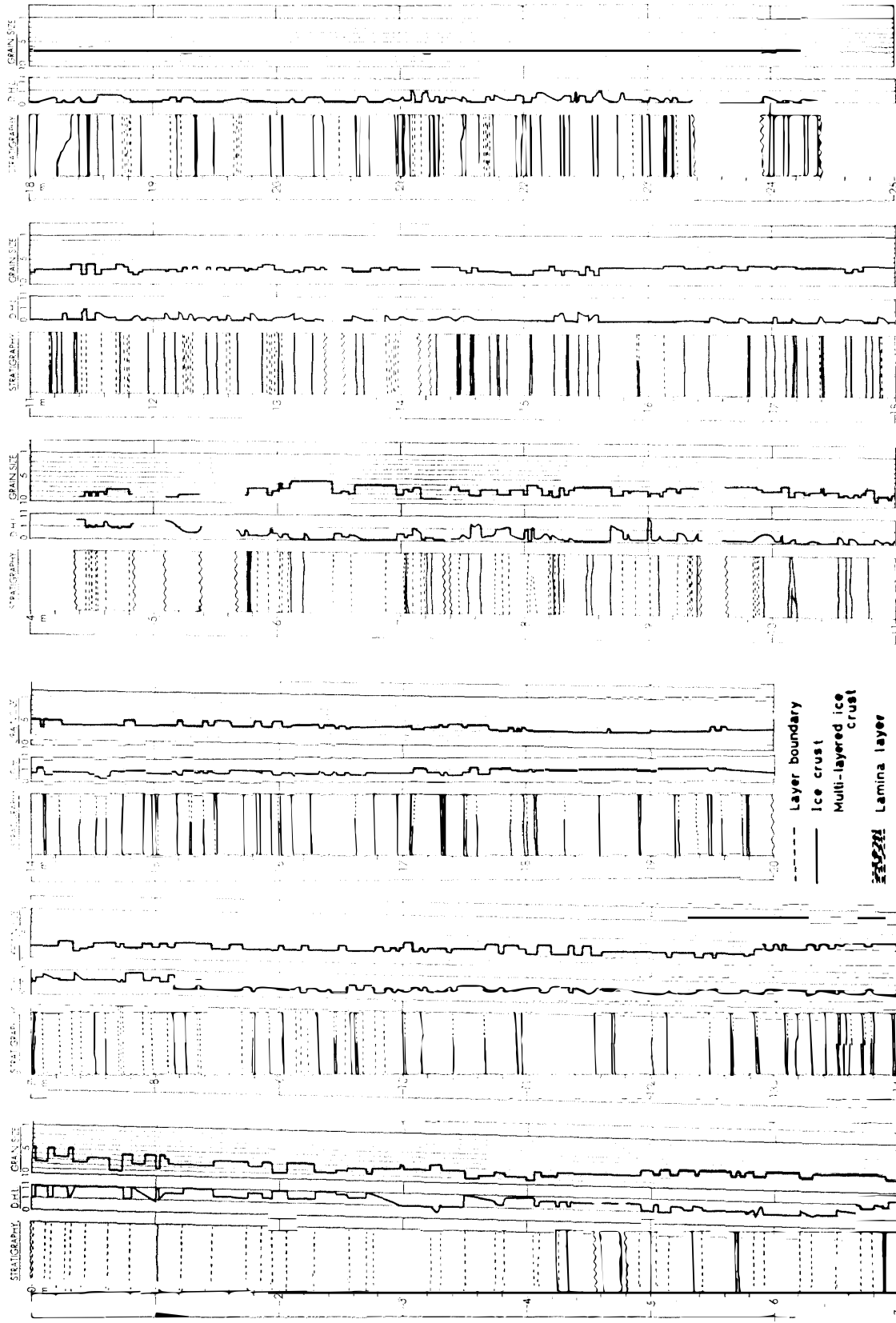


Fig. 2. Mizuho core (4 m-25 m).

Fig. 1. Mizuho 20m pt.

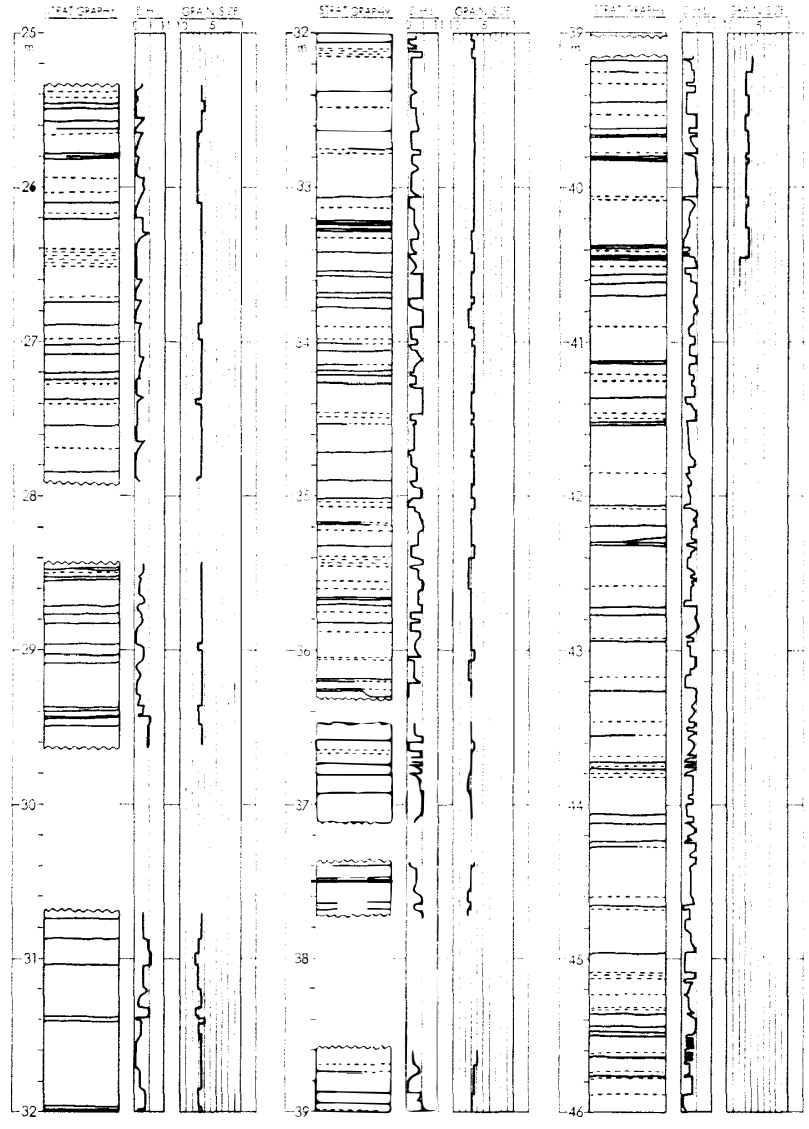


Fig. 3. Mizuho core (25 m-46 m).

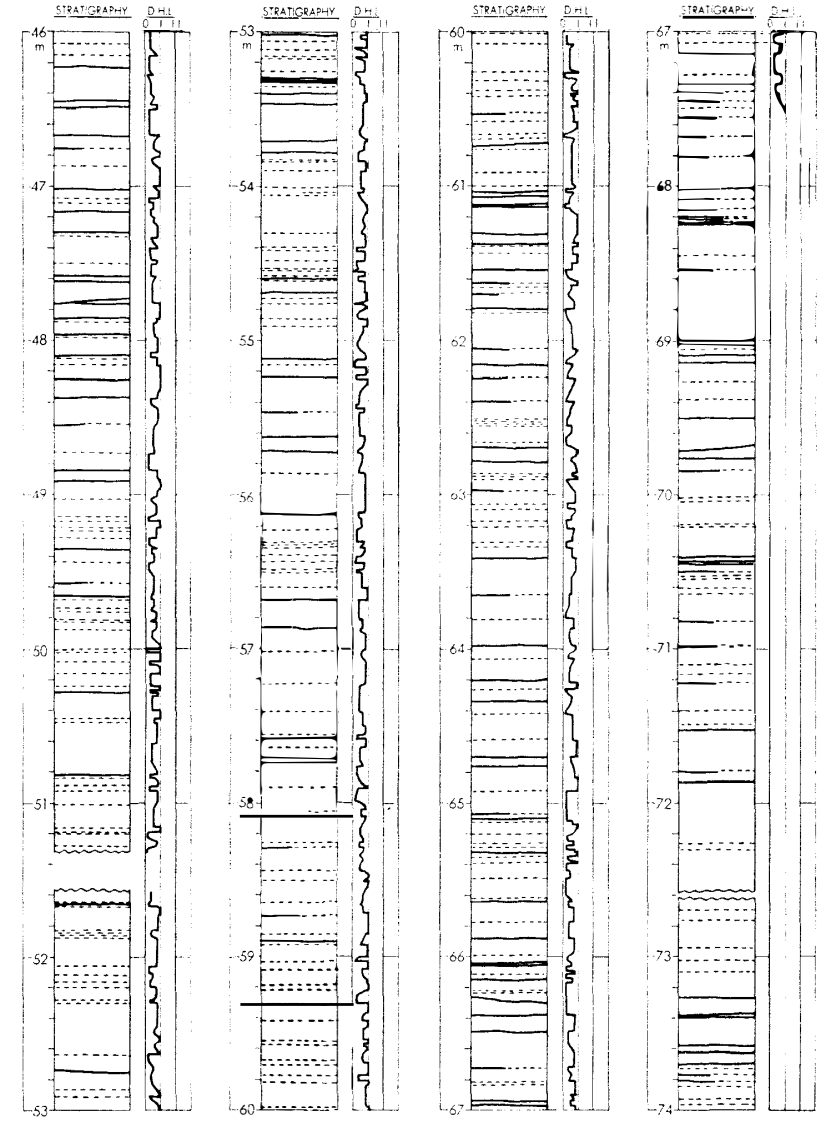


Fig. 4. Mizuho core (46 m-74 m).

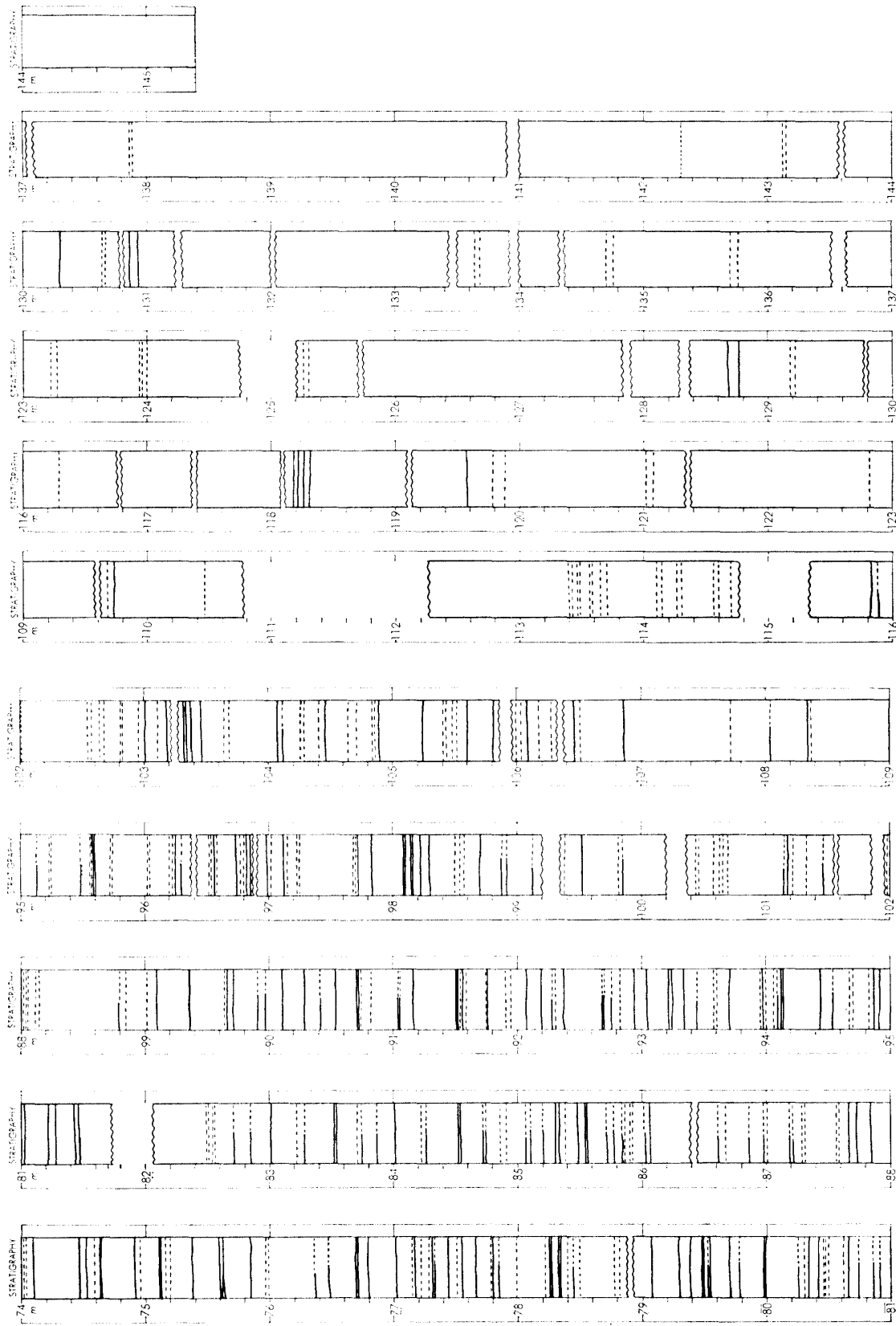


Fig. 6. Mizuho core (109 m-145 m).

Fig. 5. Mizuho core (74 m-109 m).